



**PHILADELPHIA TEAM**

**Philadelphia Partners:** Pennsylvania SPCA (PSPCA/PAWS)  
Philadelphia Animal Care & Control (PACCA)  
Philadelphia Department of Health  
University of Pennsylvania Veterinary Medicine



**Philadelphia Team:** Sandy Monterose, Megan Kane, Sheryl Pipe, Debora Bresch

**OUR GOAL IS TO MOVE THE COMMUNITY'S SHELTERS TOWARD A 75% LIVE RELEASE RATE.  
THERE ARE TWO STRATEGIES TO IMPROVE THIS RATE: REDUCE INTAKE AND INCREASE  
POSITIVE OUTCOMES FOR SHELTER ANIMALS IN THE COMMUNITY.**

### **Increasing Positive Outcomes:**

#### **Transfer Out to Placement Partners**

- The Philadelphia Rescue Assistance Program (Philly RAP) was created to assist animal control rescue partners with animal transfers into their adoption programs. Realizing that some rescues have limited financial resources, Philly RAP was created to help those groups in their efforts to “rescue” more animals from PACCA. Subsidies are disbursed to recognized PACCA rescue partners for transfers of cats of six months and older and dogs over 40 pounds from PACCA into their adoption programs.
- In addition to the Philly RAP subsidy disbursement, a medical care reimbursement system for PACCA rescue partners was instituted. This program was designed to encourage the transfer of animals with medical conditions requiring intervention from PACCA to rescue adoption programs. Animals that fall into this category may require orthopedic surgery, suffer from a disease, etc., but are considered to be adoptable animals despite their conditions. Reimbursements are given once the animal has received treatment and been adopted.
- Third and final installment of major gift to the University of Pennsylvania School of Veterinary Medicine for its Shelter Medicine Program.
- Financial assistance to PACCA for life-saving activities for its animals.
- Financial assistance to PSPCA for medical supplies for cruelty case.
- Assisted PSPCA with forensic expertise and staff resources for large cruelty investigation.
- ASPCA sponsorship of PSPCA fundraiser the Good Dog Gala.

### **Reducing Intake:**

#### **Spay/Neuter**

- Grant/financial support given to Animal Alliance of Belle Meade for spay/neuter efforts. Animal Alliance is a recognized PACCA rescue partner and a member of the Philly RAP program.
- Grant/financial support given to The Spayed Club for 1,000 high-volume, low-cost spay/neuter surgeries at its new clinic. The Spayed Club has been accepted into the Humane Alliance Program\* and it is expected that The Spayed Club will be able to perform 20,000 surgeries per year at the end of year two.

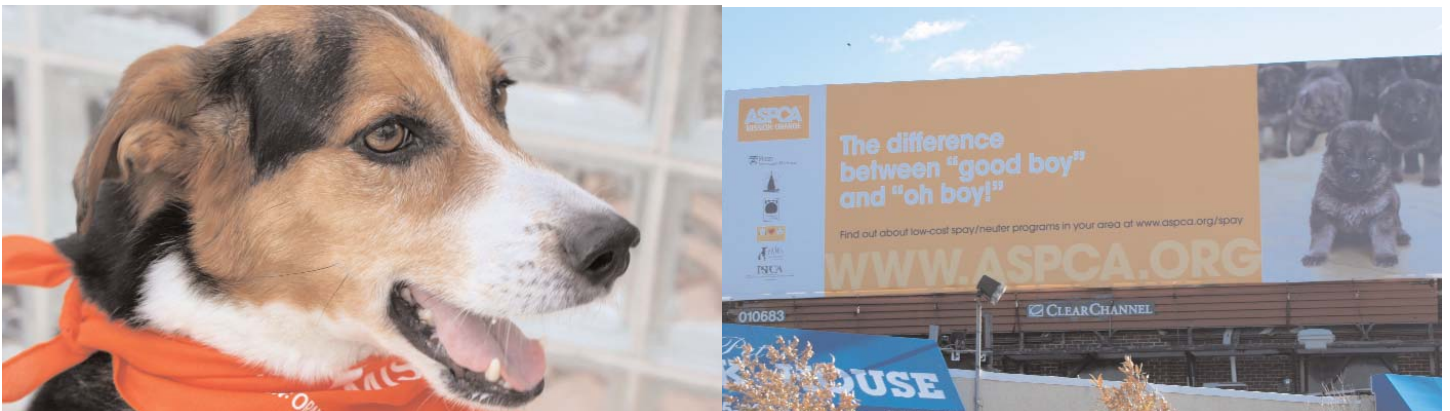
#### **Trap-Neuter-Return**

- Financial resources were given to the Philadelphia Community Cat Council to purchase much needed TNR supplies (traps, transfer cages and divider combs). These supplies will help to increase the TNR efforts of the Philadelphia Community Cat Council.

\*The Humane Alliance program is a series of high-volume, high-quality, targeted, low-cost spay/neuter clinics.

## TARGET COMMUNITY INDICATORS AND SUMMARY DATA

	January 07 - June 07	January 08- June 08	Increase/ Decrease
<p><b>TOTAL INTAKE</b></p> <p>The total number of animals entering partner facilities, except transfers between partners.</p>	14,769	15,292	+523 +4%
<p><b>LIVE RELEASE RATE</b></p> <p>The rate expresses as a percentage the number of animals returned to owner, adopted, or transferred outside the partner organizations divided by the total number of animals received (total intake).</p>	47.8%	50.3%	+2.5%
<p><b>TOTAL LIVE RELEASE</b></p> <p>The total number of animals returned to owner, adopted, or transferred outside the partner organizations.</p>	7,047	7,685	+638
<p><b>TOTAL ADOPTIONS</b></p> <p>This number includes final adoptions and transfers outside of partnership; it does not include animals placed in foster care.</p>	5,189	5,745	+556 +11%
<p><b>TOTAL TARGETED SPAY/NEUTER</b></p> <p>The total number of animals altered through low-cost spay/neuter services or a TNR program.</p>	3,015	4,168	+1,153 +38%



## Philadelphia, PA Indicators & Summary Data: Year to Date-2008

Indicators - Year to Date (YTD)	YTD Total	Rate/000 People	YTD Dogs	YTD Puppies	YTD Cats	YTD Kittens
Live Release Rate (Percent of Intake)	<b>50.26%</b>		60.0%	84.1%	47.9%	39.9%
Total Live Release	<b>7,685</b>	5.31	2,636	472	2,699	1,878
Total Intake	<b>15,292</b>	10.56	4,394	561	5,635	4,702
Euthanasia	<b>5,840</b>	4.03	1,781	69	2,950	1,040
Targeted Spay/Neuter	<b>4,168</b>	2.88	547	277	2,754	590
Financial Support (reported annually)	n/a	n/a				

Intake, Adoption, Transfer, Euthanize, Died/Lost	Dogs				Total
	Q1	Q2	Q3	Q4	
Number entering partner facilities except transfers between partners	2,064	2,330	0	0	<b>4,394</b>
Number entering partner facilities through partner transfers	99	114	0	0	<b>213</b>
Number returned to partner facilities within 30 days of adoption	111	140	0	0	<b>251</b>
Number returned to owner	165	211	0	0	<b>376</b>
Number adopted	851	682	0	0	<b>1,533</b>
Number transferred to partners	91	117	0	0	<b>208</b>
Number transferred out of your partnership	385	342	0	0	<b>727</b>
Number euthanized per owner request	173	229	0	0	<b>402</b>
Number euthanized other than owner request	642	737	0	0	<b>1,379</b>
Number died in care	16	16	0	0	<b>32</b>
Number lost in care	4	3	0	0	<b>7</b>

Intake, Adoption, Transfer, Euthanize, Died/Lost	Puppies				Total
	Q1	Q2	Q3	Q4	
Number entering partner facilities except transfers between partners	253	308	0	0	<b>561</b>
Number entering partner facilities through partner transfers	28	9	0	0	<b>37</b>
Number returned to partner facilities within 30 days of adoption	11	8	0	0	<b>19</b>
Number returned to owner	14	3	0	0	<b>17</b>
Number adopted	196	123	0	0	<b>319</b>
Number transferred to partners	35	10	0	0	<b>45</b>
Number transferred out of your partnership	73	63	0	0	<b>136</b>
Number euthanized per owner request	7	8	0	0	<b>15</b>
Number euthanized other than owner request	18	36	0	0	<b>54</b>
Number died in care	3	3	0	0	<b>6</b>
Number lost in care	0	0	0	0	<b>0</b>

	Cats				
<b>Intake, Adoption, Transfer, Euthanize, Died/Lost</b>	<b>Q1</b>	<b>Q2</b>	<b>Q3</b>	<b>Q4</b>	<b>Total</b>
Number entering partner facilities except transfers between partners	2,525	3,110	0	0	<b>5,635</b>
Number entering partner facilities through partner transfers	175	144	0	0	<b>319</b>
Number returned to partner facilities within 30 days of adoption	205	184	0	0	<b>389</b>
Number returned to owner	42	37	0	0	<b>79</b>
Number adopted	1,667	858	0	0	<b>2,525</b>
Number transferred to partners	168	104	0	0	<b>272</b>
Number transferred out of your partnership	58	37	0	0	<b>95</b>
Number euthanized per owner request	110	136	0	0	<b>246</b>
Number euthanized other than owner request	901	1,803	0	0	<b>2,704</b>
Number died in care	18	22	0	0	<b>40</b>
Number lost in care	3	4	0	0	<b>7</b>

	Kittens				
<b>Intake, Adoption, Transfer, Euthanize, Died/Lost</b>	<b>Q1</b>	<b>Q2</b>	<b>Q3</b>	<b>Q4</b>	<b>Total</b>
Number entering partner facilities except transfers between partners	1,154	3,548	0	0	<b>4,702</b>
Number entering partner facilities through partner transfers	16	69	0	0	<b>85</b>
Number returned to partner facilities within 30 days of adoption	13	43	0	0	<b>56</b>
Number returned to owner	14	8	0	0	<b>22</b>
Number adopted	562	806	0	0	<b>1,368</b>
Number transferred to partners	38	27	0	0	<b>65</b>
Number transferred out of your partnership	268	220	0	0	<b>488</b>
Number euthanized per owner request	3	2	0	0	<b>5</b>
Number euthanized other than owner request	122	913	0	0	<b>1,035</b>
Number died in care	14	41	0	0	<b>55</b>
Number lost in care	1	2	0	0	<b>3</b>

<b>Targeted Spay/ Neuter and TNR</b>	<b>Q1</b>	<b>Q2</b>	<b>Q3</b>	<b>Q4</b>	<b>Total</b>
How many low cost S/N conducted on dogs?	274	273	0	0	<b>547</b>
How many low cost S/N conducted on puppies?	185	92	0	0	<b>277</b>
How many low cost S/N conducted on cats (other than TNR)?	881	724	0	0	<b>1,605</b>
How many low cost S/N conducted on kittens (other than TNR)?	205	248	0	0	<b>453</b>
Number of cats TNR?	491	658	0	0	<b>1,149</b>
Number of kittens TNR?	12	125	0	0	<b>137</b>
<b>Total Spay/Neuter and TNR</b>	<b>2,048</b>	<b>2,120</b>	<b>0</b>	<b>0</b>	<b>4,168</b>

See the **Definitions** tab for explanations of the data items reported above.

See the **Community Descriptors** tab for key demographics for ASPCA® Mission: Orange™ communities.

## Definitions of Indicators and Data Collected

<b>Live Release Rate</b>	This rate expresses as a percentage the number of animals returned to owner, adopted, or transferred outside the partner organizations divided by the total number of animals received (total intake). Transfers between partners are excluded from this calculation.
<b>Total Live Release</b>	The total number of animals returned to owner, adopted, or transferred outside the partner organizations.
<b>Total Intake</b>	The total number of animals entering partner facilities, except transfers between partners. Partner transfers are netted out (excluded) to avoid double-counting.
<b>Euthanasia</b>	The total number of animals in partner facilities that were euthanized, including by owner request.
<b>Targeted Spay/Neuter</b>	<p>The total number of animals altered through low-cost spay/neuter services or a TNR program. Targeted includes:</p> <ul style="list-style-type: none"> <li>• Low-income by actual level or entitlement qualification OR</li> <li>• Low-income / high-risk by zip code of residence OR</li> <li>• Unlikely to have altered in absence of low-cost program OR</li> <li>• Impounded one or more times as a stray OR</li> <li>• Feral animal</li> </ul> <p><b>Note:</b> Targeted Spay/Neuter is a program output where it will be easier to see results sooner. However, it is not a bottom-line outcome like the other indicators. A good dashboard may include both outcomes and outputs.</p>
<b>Financial Support</b>	<p>For the year shown, the total dollars that partner organizations obtained through municipal funding and private fundraising.</p> <p>Funding sources for nonprofits (including affiliates of municipal organizations):</p> <ul style="list-style-type: none"> <li>• Donations excluding bequests (mail, Internet, major donors, events, etc.)</li> <li>• Local corporate donations</li> <li>• Foundation grants (not from the ASPCA® or ASPCA® Mission: Orange™ community partner organizations)</li> </ul> <p>Funding sources for municipal organizations:</p> <ul style="list-style-type: none"> <li>• Budget: fixed allocation and license/citation allocations</li> </ul> <p>This information is collected annually and is reported in the year-end summary.</p>
<b>Rate per 000</b>	<p>For <b>Intake</b>, <b>Euthanasia</b>, and <b>Financial Support</b>, the rate is calculated by dividing the value for the total number by the human population (in thousands) for the target community. The result is the rate per thousand people.</p> <p>Human population is shown on the Community Descriptors tab.</p>

<b>Dogs</b>	Adult dogs are over 6 months of age.
<b>Puppies</b>	Puppies are up to and including 6 months of age.
<b>Cats</b>	Adult cats are over 6 months of age.
<b>Kittens</b>	Kittens are up to and including 6 months of age.
<b>Number entering partner facilities except transfers between partners</b>	This number includes animals entering partner facilities because they are: surrendered, stray, in protective custody, or transferred in from agencies that are not ASPCA® Mission: Orange™ partners.
<b>Number entering partner facilities through partner transfers</b>	This number includes animals entering partner facilities from agencies or organizations that are ASPCA® Mission: Orange™ partners.
<b>Number adopted</b>	This number includes final adoptions only. It does not include animals placed in foster care.
<b>Number transferred to partners</b>	This number includes animals sent to other agencies or organizations that are ASPCA® Mission: Orange™ partners.
<b>Number transferred out of your partnership</b>	This number includes animals who are sent to agencies or organizations that are not ASPCA® Mission: Orange™ partners in your community.
<b>Low cost S/N ... other than TNR</b>	This number includes only owned animals. It does not include shelter animals altered before adoption, or cats or kittens altered through a TNR program.
<b>Cats/kittens TNR</b>	This number includes strays and ferals, including shelter cats/kittens who will be returned to a colony. It does not include owned animals or shelter cats or kittens who will not be returned to a colony.